

THE HEATON



LYTHAM QUAYS



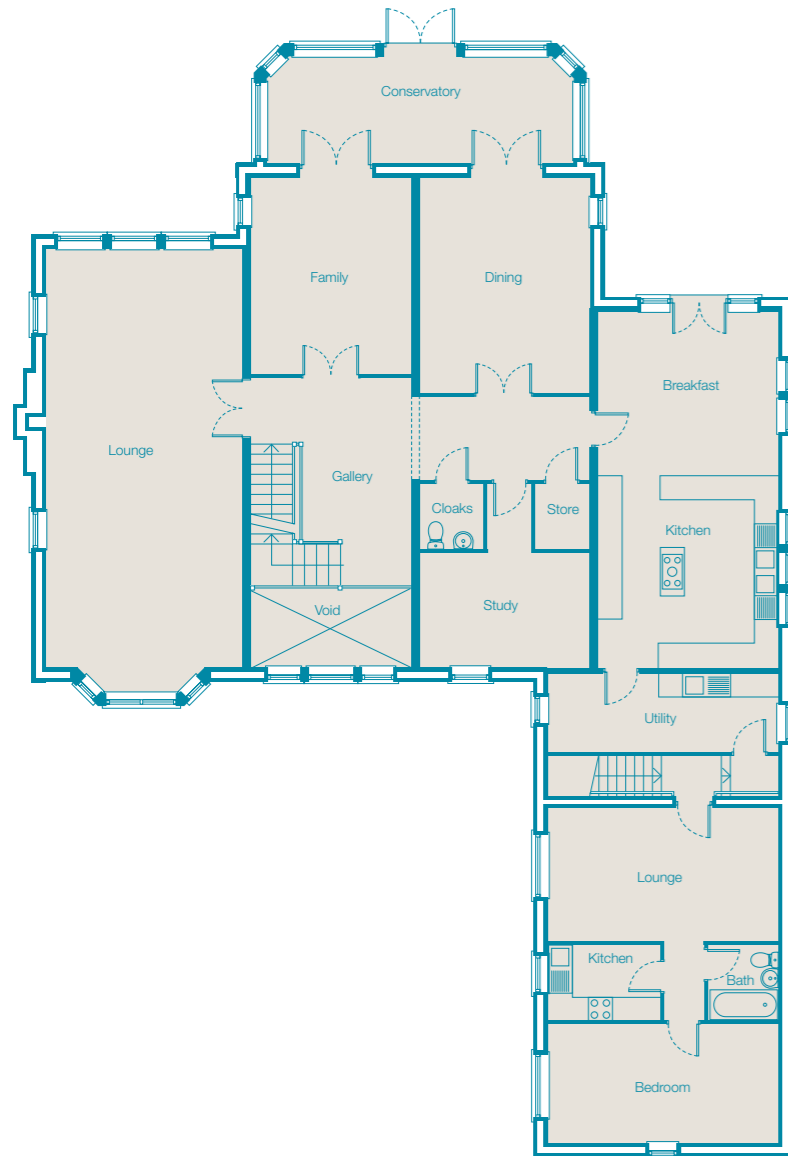
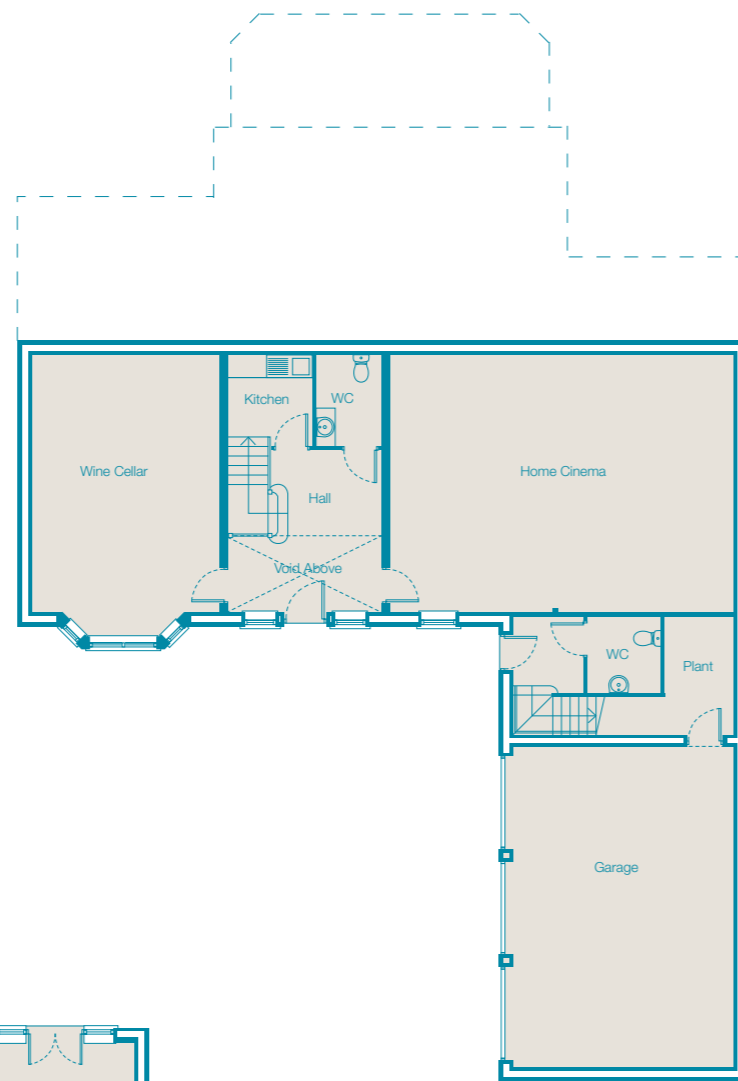
FLOOR PLANS & SPECIFICATIONS



The Heaton Villa

Lower Ground Floor

Entrance Hall	14' 0" x 13' 3"	(4258 x 4035)
Home Cinema	29' 6" x 22' 2"	(8995 x 6755)
Wine Cellar	24' 3" x 16' 2"	(7395 x 4920)
Kitchen	7' 10" x 7' 3"	(2409 x 2210)
WC	7' 10" x 5' 7"	(2409 x 1725)



Upper Ground Floor

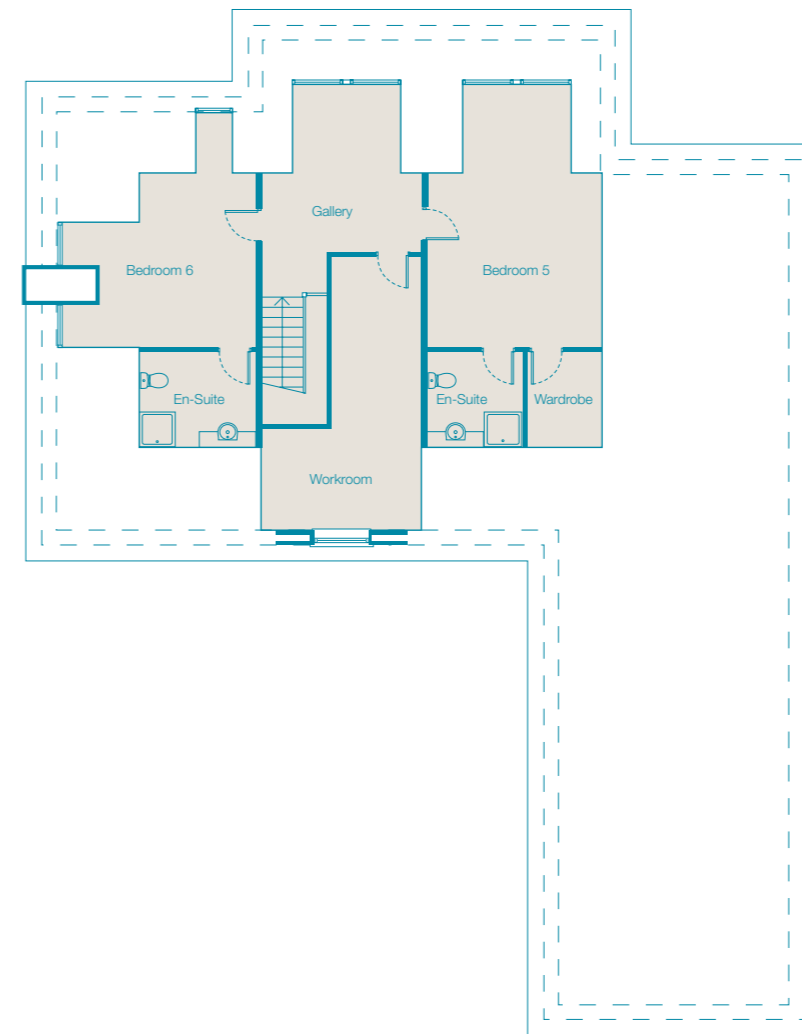
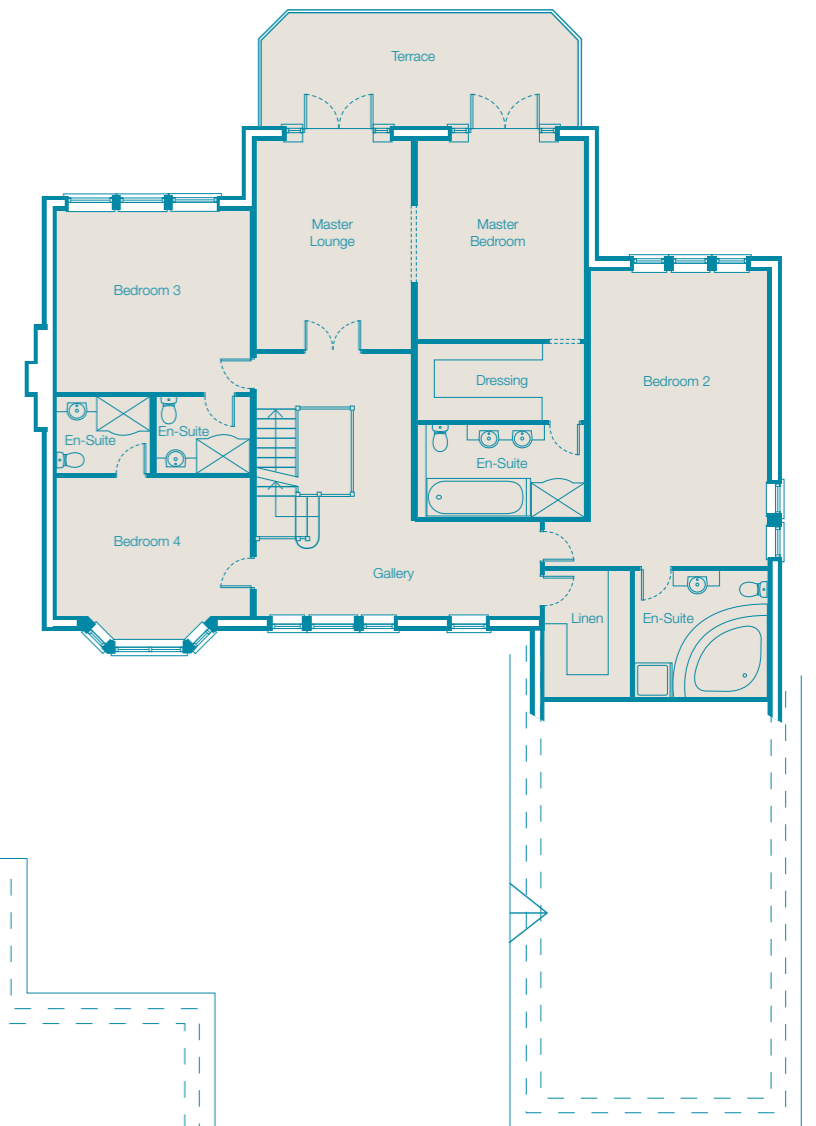
Lounge	36' 6" x 16' 2"	(11145 x 4920)
Family	16' 3" x 13' 3"	(4945 x 4035)
Dining	17' 9" x 14' 0"	(5410 x 4270)
Kitchen/Breakfast	29' 3" x 14' 9"	(8930 x 4510)
Utility	19' 0" x 6' 6"	(5780 x 1978)
WC	5' 5" x 5' 3"	(1650 x 1590)
Store	5' 5" x 4' 6"	(1650 x 1370)
Study	14' 0" x 9' 4"	(4270 x 2860)
Conservatory	25' 3" x 8' 9"	(7700 x 2675)

Annexe

Garage	27' 7" x 19' 0"	(8407 x 5780)
Plant Room	10' 0" x 6' 6"	(3078 x 2000)
WC	6' 6" x 6' 0"	(1978 x 1810)
Lounge	19' 0" x 11' 0"	(5780 x 3348)
Bedroom	19' 0" x 9' 9"	(5780 x 2960)
Kitchen	9' 6" x 6' 3"	(2890 x 1900)
Bathroom	5' 8" x 6' 3"	(1772 x 1900)

First Floor

Master Bedroom	16' 10" x 14' 3"	(5145 x 4345)
Master Lounge	17' 9" x 13' 3"	(5410 x 4035)
En-Suite	14' 3" x 7' 10"	(4345 x 2400)
Dressing	14' 3" x 6' 7"	(4345 x 2000)
Bedroom 2	25' 2" x 15' 0"	(7658 x 4585)
En-Suite	11' 3" x 10' 10"	(3420 x 3300)
Bedroom 3	16' 4" x 15' 6"	(4995 x 4720)
En-Suite	8' 0" x 6' 7"	(2450 x 2000)
Bedroom 4	16' 4" x 13' 10"	(4995 x 4225)
En-Suite	8' 0" x 6' 7"	(2450 x 2000)
Linen	10' 10" x 7' 5"	(3300 x 2260)



Attic Floor

Bedroom 5	21' 9" x 14' 4"	(6623 x 4385)
En-Suite	7' 10" x 7' 9"	(2400 x 2395)
Dressing	7' 10" x 6' 2"	(2400 x 1885)
Bedroom 6	19' 4" x 16' 0"	(5910 x 4865)
En-Suite	9' 7" x 7' 9"	(2916 x 2395)
Workroom	22' 6" x 13' 3"	(6870 x 4035)

Measurements are specified in both imperial and metric sizes. *All dimensions are maximum.

